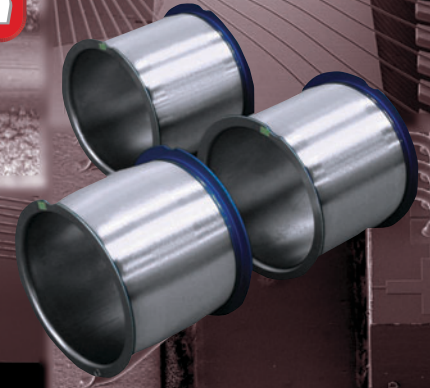


# Silver Alloy Bonding Wire

**New  
Launch**

# SEA

## Silver Enhanced A type

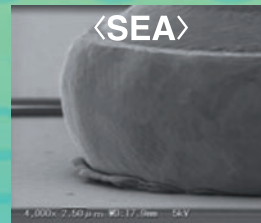


### Features of SEA

- SEA is compatible with a low cost and high workability.
- SEA shows high performance by a LED package.

	Gold	SEA	Copper
Material Cost	★	★★★	★★★★
Forming Gas	—	Only N <sub>2</sub>	N <sub>2</sub> +H <sub>2</sub>
Chip Damage	★★★★	★★★	★
Process window	★★★★	★★★	★
Reflectivity	★	★★★★	★

### Ball Hardness (Al Splash)

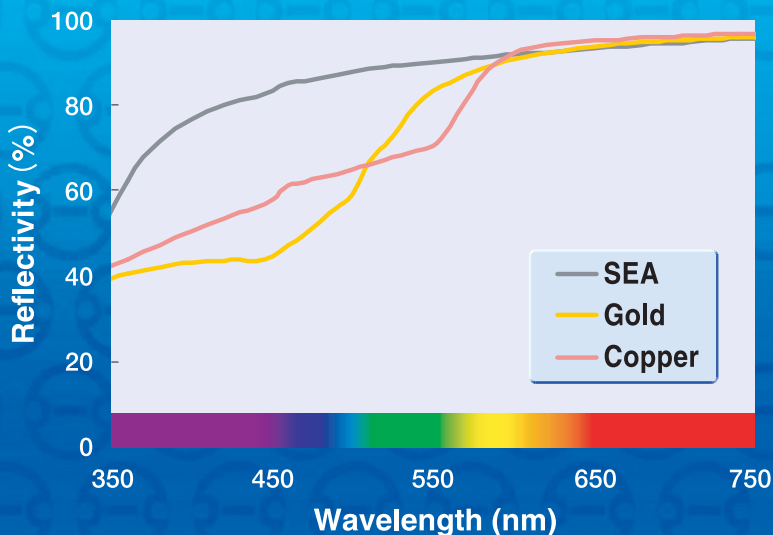


**[Pad Material]**  
Al-0.5% Cu  
Thickness 0.8um



**[Bond Parameter]**  
Force:40g  
US-Power:200mA  
Time:6.0ms

### Reflectivity



### Reliability

HAST Migration Test	PCT
130 deg C 85% RH DC 6V	120 deg C 100% RH 2 atm
<b>96hrs Pass</b>	<b>500hrs Pass</b>